

FLUID SEALING INTERNATIONAL

CUSTOMER DRIVEN. SUPERIOR SOLUTIONS.

Eco-Flow

- Conserves water
- Eliminates dry run
- 100% Mechanical/self operating, no outside power source of any kind
- Temperature response is unaffected by pressure variations
- Operates in narrow temperature band
- Fail safe design



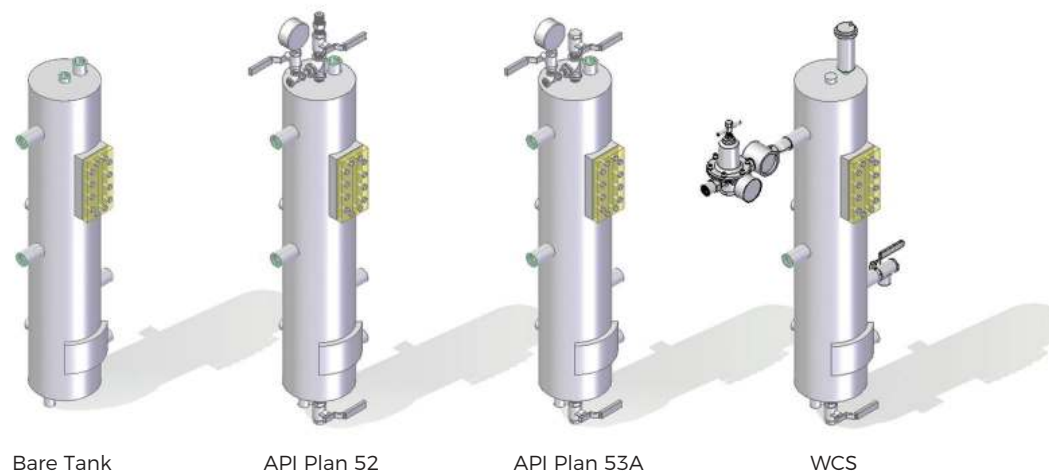
Flowmeters

- Single and double flowmeters
- Reliable operation/solid construction
- Excellent corrosion and heat resistance
- Clog resistant flow control valve
- Built-in tube cleaner
- 8 connector options
- Mounting bracket
- Alarm ready



Tanks

- 304SS ANSI Lite Tanks
- 12 Liter (3 US Gallon)
- Additional accessories available



Bare Tank

API Plan 52

API Plan 53A

WCS

To learn more about our Fluid Sealing International, contact us at **412-865-2101** or www.worldfsi.net/contact-us.



Fluid Sealing International
920 Second Avenue
Coraopolis, PA 15108

412-865-2101

www.worldfsi.net

Fluid Sealing International
7 Zinc Road
New Era Springs, 1159
Gauteng Province
South Africa

011-8171112

Double-Cartridge Seal TYPE 2080D

ENGINEERED FOR APPLICATIONS REQUIRING A DOUBLE SEAL



www.worldfsi.net





Double-Cartridge Seal **TYPE 2080D**

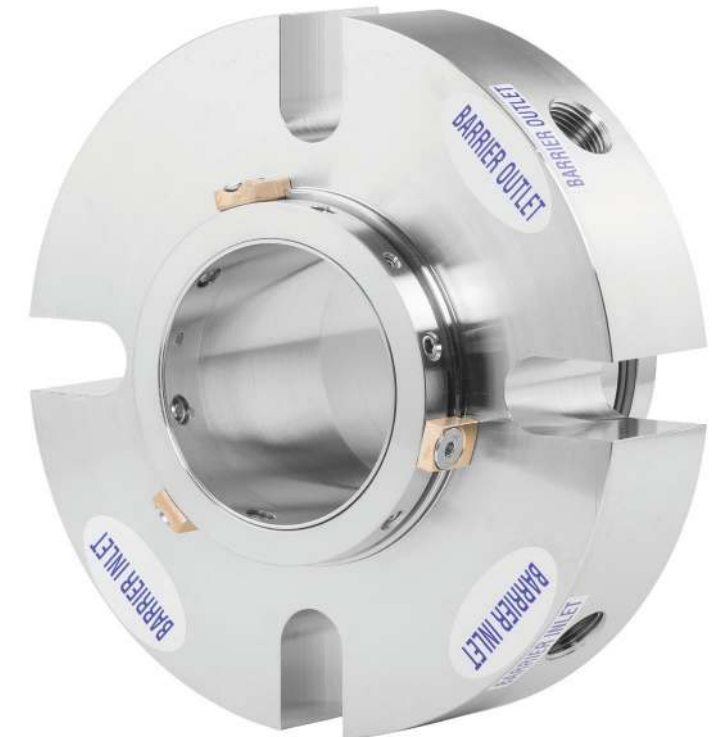
Designed to be the longest-lasting, most-reliable double seal.

- Fits both ANSI standard bore and big bore seal chambers
- Stationary design enables optimal face alignment
- Springs are isolated from the product to eliminate clogging and loss of face loading
- Double-balanced primary and mating rings allow for pressure in either direction
- Semi-dynamic O-ring on polished surface prevents fretting of elastomers
- Outboard faces have OD pressure for higher pressure capabilities and better cooling
- Efficient pumping ring facilitates cooling and venting
- Factory preset to eliminate installation errors
- Pressure-tested to ensure greater sealing reliability

Premium-grade construction is standard. Options are available for Alloy C-276, Alloy 20Cb-3®, or titanium metallurgy; AFLAS®, EPR, FFKM, or nitrile elastomers; and a tungsten-carbide rotating seal face. The FSI Type 2080D features three connections to accommodate API Plan 52, API Plan 53A, and WCS piping plans. A stationary design enables optimal face alignment, and its C-276 springs are isolated from the product to eliminate clogging and loss of face loading.

Double-balanced primary and mating rings allow for pressure in either direction, enabling the FSI Type 2080D to run as a tandem or as a double. Robust cross sections allow for minimal rotation of faces. There is also no fretting of elastomers, because the FSI Type 2080D's semi-dynamic O-ring moves across a non-metallic, smooth surface.

The FSI Type 2080D has OD pressure on the outboard seal which enables better cooling, higher pressures capabilities and venting of entrapped air in vertical applications. Plus it's efficient pumping ring facilitates better cooling between the seals. As with all our seals, the FSI Type 2080D is factory preset to eliminate installation errors and pressure tested to ensure greater sealing reliability.

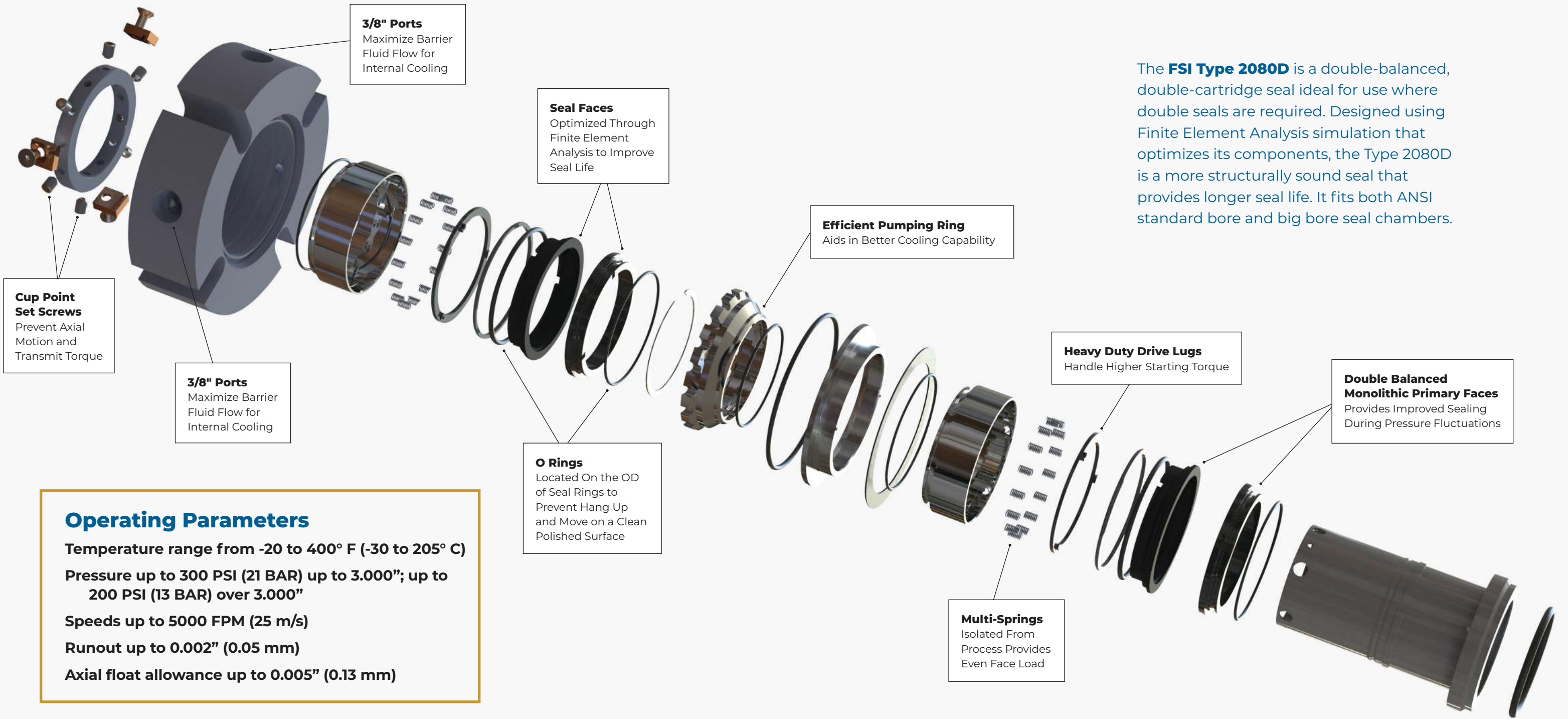


	STANDARD	OPTIONS
Face/Primary Ring	Resin Impregnated Carbon	Sintered Silicon Carbide Nickel Tungsten Carbide
Seat/Mating Ring	Sintered Silicon Carbide	Nickel Tungsten Carbide
Orings	Fluoroelastomer Ethylene Propylene	Perfluoroelastomer Nitrile, Aflas
Springs	Alloy C-276	
Gland Gasket	Non-Asbestos	Glassed Filled PTFE
Sleeve, Gland, Collar, Retainer	316SS	Alloy C-276, Titanium



Double-Cartridge Seal
TYPE 2080D

Cartridge Installation Is Easy



The **FSI Type 2080D** is a double-balanced, double-cartridge seal ideal for use where double seals are required. Designed using Finite Element Analysis simulation that optimizes its components, the Type 2080D is a more structurally sound seal that provides longer seal life. It fits both ANSI standard bore and big bore seal chambers.

Operating Parameters

- Temperature range from -20 to 400° F (-30 to 205° C)
- Pressure up to 300 PSI (21 BAR) up to 3.000"; up to 200 PSI (13 BAR) over 3.000"
- Speeds up to 5000 FPM (25 m/s)
- Runout up to 0.002" (0.05 mm)
- Axial float allowance up to 0.005" (0.13 mm)



Proven Performance • Engineered for Quality and Precision

Fluid Sealing International designs, builds, and services precision sealing systems used in manufacturing, oil and gas pipelines, and most major industries. Whether you need standard mechanical seals or specially engineered custom seals, we can meet your specific needs and requirements.

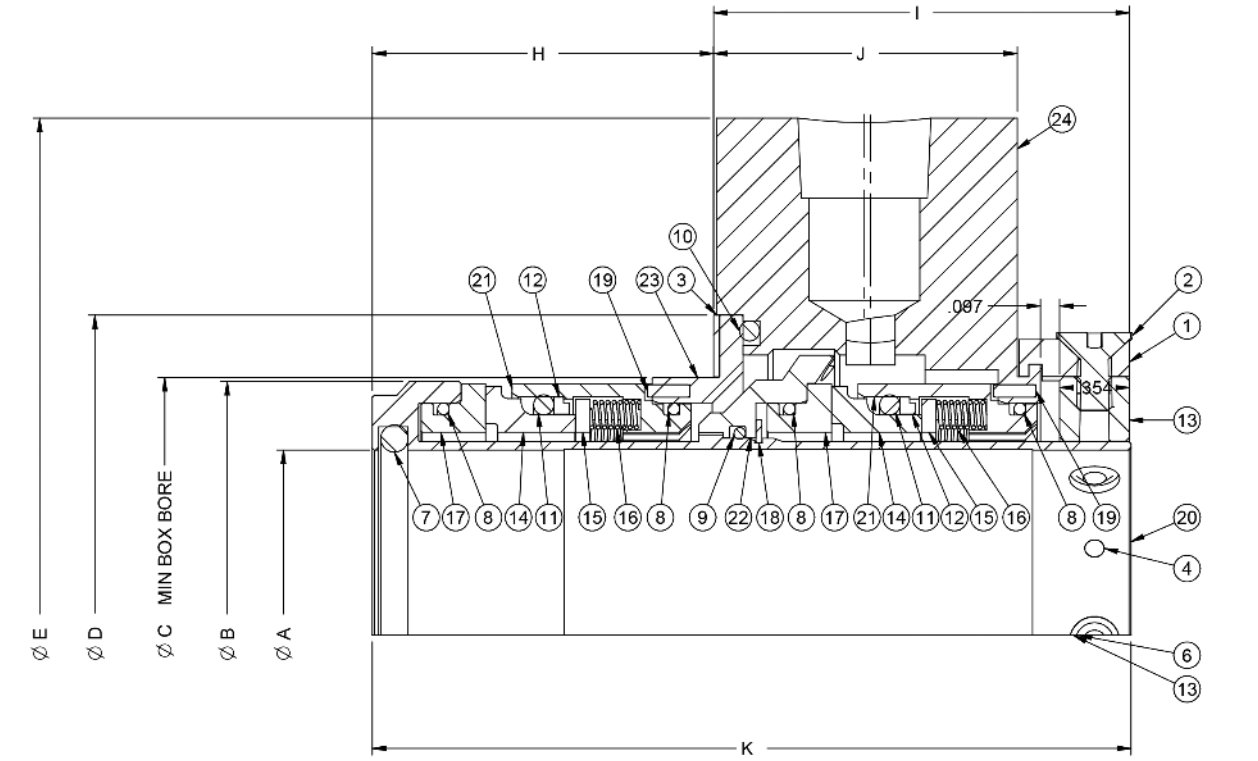
Count on FSI for customer-driven designs for superior solutions.



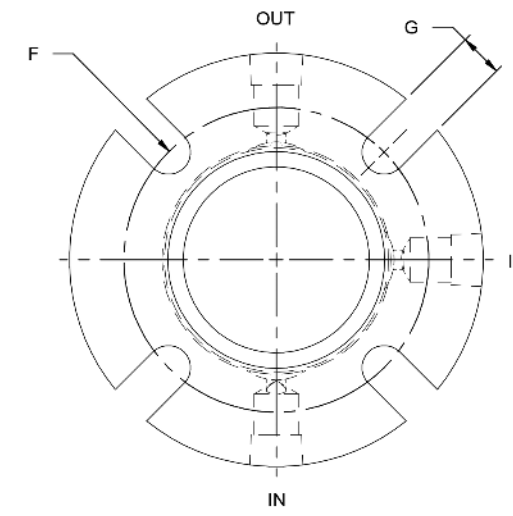
Double-Cartridge Seal
TYPE 2080D

STANDARD BORE											
SIZE	ØA	ØB	ØC	ØD	ØE	BC. F	G	H	I	J	K
1.375	1.379	1.910	1.990	2.690	4.38	3.309	.56	1.755	2.095	1.644	3.85
1.500	1.504	2.160	2.240	2.875	4.88	3.506	.56	1.755	2.095	1.644	3.85
1.625	1.629	2.280	2.360	3.000	5.00	3.619	.56	1.755	2.095	1.644	3.85
1.750	1.754	2.410	2.490	3.125	5.25	3.748	.56	1.755	2.095	1.644	3.85
1.875	1.879	2.535	2.615	3.250	5.25	3.869	.56	1.755	2.095	1.644	3.85
2.000	2.004	2.660	2.740	3.375	5.50	4.000	.56	1.755	2.095	1.644	3.85
2.125	2.129	2.785	2.865	3.500	5.86	4.471	.69	1.755	2.095	1.644	3.85
2.250	2.254	2.910	2.990	3.625	6.50	4.568	.69	1.755	2.095	1.644	3.85
2.375	2.379	3.035	3.115	3.750	6.50	4.720	.69	1.755	2.095	1.644	3.85
2.500	2.504	3.160	3.240	3.875	6.75	4.879	.69	1.755	2.095	1.644	3.85
2.625	2.629	3.285	3.365	4.000	6.75	5.172	.69	1.755	2.095	1.644	3.85
2.750	2.754	3.450	3.490	4.125	6.75	5.170	.69	1.755	2.095	1.644	3.85
2.875	2.879	3.575	3.615	4.250	7.00	5.312	.69	1.755	2.095	1.644	3.85
3.000	3.004	3.700	3.740	4.375	7.75	5.720	.69	1.755	2.095	1.644	3.85
3.125	3.129	3.825	3.865	4.500	7.88	5.845	.69	1.755	2.095	1.644	3.85
3.250	3.254	3.950	3.990	4.625	7.44	5.845	.39	1.755	2.095	1.644	3.85
3.375	3.379	4.075	4.115	4.750	8.13	6.095	.81	1.755	2.095	1.644	3.85
3.500	3.504	4.200	4.240	4.875	8.25	6.220	.81	1.755	2.095	1.644	3.85
3.625	3.629	4.325	4.365	5.000	8.38	6.250	.81	1.755	2.095	1.644	3.85
3.750	3.754	4.450	4.490	5.125	8.75	6.770	.81	1.755	2.095	1.644	3.85
3.875	3.879	4.575	4.615	5.250	8.79	6.636	.81	1.755	2.095	1.644	3.85
4.000	4.004	4.700	4.740	5.375	9.00	6.761	.81	1.755	2.095	1.644	3.85
4.125	4.129	4.825	4.865	5.500	9.00	6.886	.81	1.755	2.095	1.644	3.85
4.250	4.254	4.950	4.990	5.625	9.25	7.011	.81	1.755	2.095	1.644	3.85
4.375	4.379	5.075	5.115	5.750	9.25	7.150	.81	1.755	2.095	1.644	3.85
4.500	4.504	5.200	5.240	5.875	9.50	7.261	.81	1.755	2.095	1.644	3.85
4.625	4.629	5.325	5.365	6.000	9.50	7.400	.81	1.755	2.095	1.644	3.85
4.750	4.754	5.450	5.490	6.125	10.38	7.574	.81	1.755	2.095	1.644	3.85

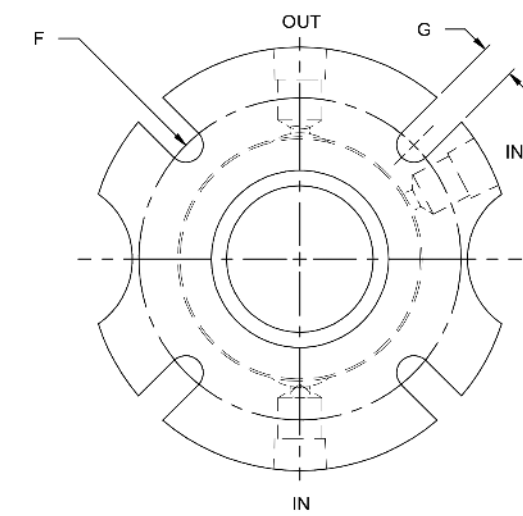
BIG BORE											
SIZE	ØA	ØB	ØC	ØD	ØE	BC. F	G	H	I	J	K
1.375+	1.379	1.910	2.115	3.452	5.38	4.089	.56	1.755	2.095	1.644	3.85
1.750+	1.754	2.410	2.490	4.137	6.25	5.059	.56	1.755	2.095	1.644	3.85
1.875+	1.879	2.535	2.615	4.202	6.25	4.969	.56	1.755	2.095	1.644	3.85
2.125+	2.129	2.785	2.865	4.512	7.13	5.501	.69	1.755	2.095	1.644	3.85
2.500+	2.504	3.160	3.240	5.199	7.88	6.004	.69	1.755	2.095	1.644	3.85
2.625+	2.629	3.285	3.365	5.262	7.50	6.064	.69	1.755	2.095	1.644	3.85



- 01 SPACER
- 02 SCREW
- 03 GASKET
- 04 SET SCREW
- 05 PIN
- 06 SCREW
- 07 ORING
- 08 ORING
- 09 ORING
- 10 ORING
- 11 ORING
- 12 BACK UP RING
- 13 DRIVE COLLAR
- 14 PRIMARY RING
- 15 THRUST DISC
- 16 SPRING
- 17 MATING RING
- 18 RETAINING RING
- 19 PIN
- 20 SLEEVE
- 21 PRIMARY HOLDER
- 22 ROTARY HOLDER
- 23 INBOARD GLAND
- 24 GLAND PLATE



STANDARD BORE



BIG BORE



Fluid Sealing International is a certified ISO 9001:2015 Quality Management System.

Registration No. 17-102470.1Q

This quality standard applies to the design, manufacture, and service of mechanical seals, contract manufacturing services, and distribution center services for the oil, gas, commercial, industrial, and aerospace industries.

Our certification represents Fluid Sealing International's commitment to quality products and services and the processes that ensure them.